

# Boston Int'l Antiquarian Book Fair 2022

## ECLECTIBLES



**Booth 327**

### *Collections & Archives*



### ECLECTIBLES

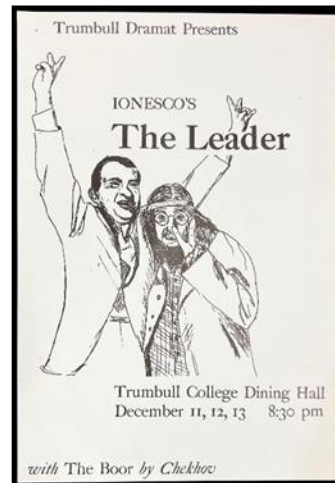
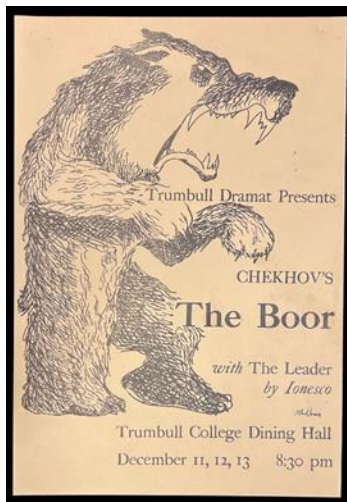
Sheryl Jaeger & Ralph Gallo

860.872.7587

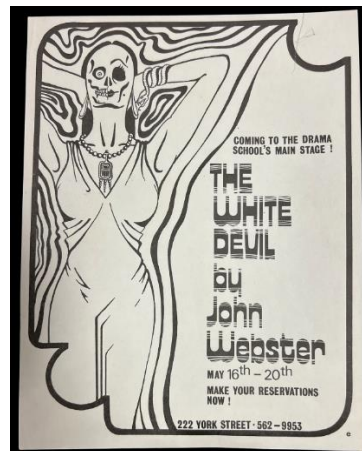
[ephemera@eclectibles.com](mailto:ephemera@eclectibles.com)

[www.eclectibles.com](http://www.eclectibles.com)





posit was one of the signs used in protest during the 1970 May Day on the New Haven Green. The event is sometimes referred to as the "New Haven Green Disorders", a day on civil unrest in which thousands of Black Panthers supporters rallied together on the New Haven Green and in the Yale colleges for teach-ins, concerts, and protest. "Shut Yale Down" is a slogan that appears frequently in oral and written accounts of that day.



Two of the posters ("The Lustre of Apelles" and "Viva La Muerte") have red crayon or colored pencil corrections, leading us to believe that at least some of the posters originated from a local New Haven printer and are printer's proofs. Many have evidence of adhesive, staples, or tape, however, which would indicate that some were used on campus. At least two of the posters have comments written in pen such as "Good" or "Excellent"; one poster promoting a feminist lecture sports a snarky annotation that reads, "B+ in Social Science Buzzwords". Many have dates in pencil or pen to the versos. All are in very good, near-fine, or fine condition.

Full spreadsheet listing of items available on request.

(#22006892)

\$5,500.

*As expected for the early 1970s in a university setting subject matter includes Social Movements (Anti-war, Women, Viet Nam), Activism, Religion, Drama, Music, Poetry and more.*

Very good to fine condition. Minor flaws include toning, residue or damage from adhesive or staples, and offsetting.





2. [Salesman's Sample Books and Dummies][Paint and Pigments] **Fine Salesman's Sample Book for Martin-Senour Co. Paints.** Martin-Senour Co., Carpenter Morton. [Chicago, Illinois]. c.1903. A salesman's sample book for Martin-Senour Co., manufacturer of paints in the late nineteenth and early twentieth centuries. Includes paint chip samples and brochures with detailed descriptions of each line of paint offered. The Martin-Senour Co. was founded as the Senour Company in 1878 in Chicago by Phillip and William Senour; in 1903, it was renamed to reflect the involvement of their chief salesman and eventual owner Zelotes E. Martin. Sherwin-Williams acquired the business in 1917, and is still a part of their line today.

Folio (11.5" by 9.5"), approx. 50 leaves of which 21 leaves recto and verse filled with 19 fold-out paint chip samples, 19 fine can labels, brochures, or samples tipped-in. In original textured cloth album, upper board stamped with company name in gilt. Also includes a "mailing list" for salesman to include the contact information for only those most likely to purchase their paint.

Includes paint for wagon, monarch, floor, porch and deck, yacht white, chair, carriage, barn and roof, red school house paint, neu-tone flat interior, An-teek-een flat stain finish, house, varnish floor, beacon floor, roof barn and bridge, and drop black, (#22006589) \$1,800.

*Exceptional examples of both comprehensive fold out paint chips sample brochures and well designed artistic labels printed on polished stock. One label includes a paint chip at center.*

Very good. Toned, paper brittle, minor short tears and scuffs, shelf wear to binding. Several leaves, paint chips loose. Some offsetting from paint chips.



[Korean War][ Propaganda][ Visual Warfare][ U.S. Psychological Warfare Division] **Collection of Korean War Propaganda - pro and con Korea, China, Russian and America.** Korea. 1952-1953. A collection of Korean War propaganda, showcasing the intensity and vitriol employed by both sides through visual warfare. In total, there are twenty-eight (28) items representing four (4) languages: Korean, Chinese, Russian, and English. Several of the items were produced by American forces with the intention of convincing Chinese soldiers to abandon their post and seek asylum with the U.N. Propaganda appears in political cartoon or newsletter form, as well as (what appear to be fake) accounts from Chinese soldiers asserting good treatment from the U.N.

The twenty-eight (28) items include:

[Anti-war political cartoon with message in Chinese. c.1953]. A political cartoon with anti-war message addressed to Chinese officers and soldiers in North Korea. Possibly originating from U.S. forces? Printed in blue, measuring 5" by 8". Toned, vertical crease, minor dust soiling.

"A Third Winter of War". [Korea:] U.S. Psychological Warfare Division, [1952]. A Chinese-language political cartoon printed in blue and black showing soldiers suffering through another winter. Measures 11" by 4", toned. Stapled in upper left-hand corner to a leaf typewritten in English by Psychological Warfare Division with a translation and explanation, measuring 13" by 8". Toned.

[Carbon copy letter, c.1953]. A carbon copy addressed to the "Officers and Men of The U.S. Armed Forces" from "The Chinese People's Volunteer Forces". It is in careful cursive, and English: "Never believe in those illwilled fabrications of sheer propaganda of your Boss ... We are one in the common struggle of upholding peace and opposing war. With the knowledge that you are peace inclined people but duped and whipped here to fight this infamous war. So we guarantee you good treatment as soon as you lay down your arms..." Measures 5" by 6.25", verso blank. Vertical crease, minor



toning, edge wear.

"CCF Flag; Flag of Aggression". [Korea:] U.S. Psychological Warfare Division, 1952. An effort by American forces to "familiarize Chinese troops with the various visual symbols used by the U.N." The image resembles the Chinese flag but replaces the star with a skull, warning Chinese soldier of death. Measures 2" by 2.5". Stapled in upper left-hand corner to a leaf typewritten in English by Psychological Warfare Division with a translation and explanation, measuring 10.5" by 8". Toned.

"CCF Surrender Appeal". [Korea:] U.S. Psychological Warfare Division, 1951. Printed political cartoon propaganda in Chinese from American forces urging surrender. Measures 7.5" by 5", toned. Stapled in upper left-hand corner to a leaf typewritten in English by Psychological Warfare Division with a translation and explanation, measuring 10.5" by 8". Toned with some spotting.

[Chinese propaganda, c.1953]. Chinese language illustrated propaganda flyer printed on pink paper with images of food along the border. Measures 7" by 5", verso blank.

"Far East Command". [Korea:] First Radio Broadcasting and Leaflet Group, 1953. Chinese-language propaganda by American forces telling the story of a Chinese soldier who supposedly was able to escape and be welcomed by the U.N. Includes cartoon drawing and a photo. Measures 5" by 8", minor toning. Stapled in upper left-hand corner to a leaf typewritten in English by the Leaflet Group with a translation and explanation, measuring 10.5" by 8". Toned.

"Free World Weekly Digest, Issue No. 84". [Korea:] First Radio Broadcasting and Leaflet Group, 1952. Chinese-language propaganda by American forces in the form of a newsletter with cartoons and photo-illustrations. Measures 10" by 8", some toning. Previously stapled in upper left-hand corner to a leaf typewritten in English by the Leaflet Group with a translation and explanation, measuring 10.5" by 8". Toned.



"Free World Weekly Digest, Issue Nr. 112". [Korea:] First Radio Broadcasting and Leaflet Group, 1953. Chinese-language propaganda by American forces in the form of a newsletter with cartoons and photo-illustrations. Measures 10" by 8", some toning. Stapled in upper left-hand corner to a leaf typewritten in English by the Leaflet Group with a translation and explanation, measuring 10.5" by 8". Toned.

"Free World Weekly Digest, Special Issue". [Korea:] First Radio Broadcasting and Leaflet Group, 1952. Chinese-

language propaganda by American forces in the form of a newsletter with photo-illustrations. Measures 10" by 8", some toning. Stapled in upper left-hand corner to a leaf typewritten in English by the Leaflet Group with a translation and explanation, measuring 10.5" by 8". Toned.

"India's Role in the Korean Truce". [Korea:] First Radio Broadcasting and Leaflet Group, 1953. Chinese-language propaganda from American forces attempting to convince Chinese prisoners of war that India was instrumental in a truce. Measures 10" by 8", some toning. Stapled in upper left-hand corner to a leaf typewritten in English by the Leaflet Group with a translation and explanation, measuring 10.5" by 8". Toned.

[Korean political cartoon propaganda. South Korea, c.1953]. A political cartoon in Korean for Koreans, with an anti-communist and anti-Russian message. Printed in red on recto, green on verso. Measures 4" by 5". Minor toning, one or two tiny short tears, vertical crease.

[Korean political cartoon propaganda. South Korea, c.1953]. What appears to be a political cartoon in Korean for Koreans, decrying the U.N.'s involvement and asking, through the medium of a crying baby, why innocents must be involved in the war. Printed in red and black, measuring 5" by 7.5". Minor toning, letter folds, tear along upper right-hand edge (not affecting image or text).

"Message to 67th CCF Division". [Korea:] U.S. Psychological Warfare Division, [1953]. Printed leaflet with gory political cartoon: "SOLDIERS OF THE 67TH CCF DIVISION. WILL THIS HAPPEN TO YOU?" Printed in red and black on pink paper. Measures 5.5" by 8". Previously stapled in upper-left hand corner to a leaf typewritten in English by Psychological Warfare Division with a translation and explanation, measuring 10.5" by 8". Minor toning, short tears.

"Message to 67th CCF Division". [Korea:] U.S. Psychological Warfare Division, 1953. Printed political cartoon propaganda trying to convince Chinese soldiers to defect to the U.N. Printed in red and black on yellow paper. Measures 11" by 3.5". Minor toning. Stapled in upper left-hand corner to leaf typewritten by the Division with explanation and translation, measuring 10.5" by 8". Minor toning, short tears.

"Message to Students of Zumgang Political Academy". [Korea:] U.S. Psychological Warfare Division, 1952. Korean-language propaganda by American forces targeting Korean students. Measures 5.5" by 8", printed in red and blue. One small nick/short tear to upper edge. Stapled in upper-left hand corner to a leaf typewritten in English by Psychological Warfare Division with a translation and explanation, measuring 10.5" by 8". Minor toning, short tears to upper edge.

"Moscow Conference". [Korea:] First Radio Broadcasting and Leaflet Group, 1953. Chinese-language propaganda from American forces attempting to reinforce resentment of Chinese towards Russians. Measures 8" by 5", some toning. Loose, but previously stapled in upper left-hand corner to a leaf typewritten in English by the Leaflet Group with a translation and explanation, measuring 10.5" by 8". Toned.

"No War was Ever Won That the Rear Stood Against". [England, c.1953]. Anti-war propaganda distributed in Great Britain, in an effort to stop the U.S. intervention in Korea: "Throughout the world the peace-loving people are demanding the American imperialists to stop their intervention in Korea. Not only civilians of different countries but soldiers themselves also are crying for the restoration of justice and human law." Verso printed in faint purple ink, with photo of soldiers against intervention. Printed in blue, measuring 7.25" by 5", photo-illustrated, two hole punched at head. Short tears, wear, dust soiling.

[Original political cartoon.] Untitled and unattributed, c.1953. An incisive political cartoon depicting Russia and China pulling Korea northward, with the United States and U.N. pulling it southward. Visually references the idea of proxy war and communism. Blue ballpoint pen, pink highlighter, and gray pen on paper (7.5" by 6"), verso blank. Minor short tears, remnants of adhesive/other paper to verso. Minor toning.



"Rehabilitation news, issue No. 17". [Korea:] First Radio Broadcasting and Leaflet Group, 1953. Korean-language propaganda by American forces in the form of a newsletter with photo-illustrations. Details the rebuilding of a textile mill in Korea after "the ravages of the communist invasion". Measures 10.5" by 8", some toning. Stapled in upper left-hand corner to a leaf typewritten in English by the Leaflet Group with a translation and explanation, measuring 10.5" by 8". Toned.



Russian-language propaganda produced by the Far East Command, 1953. Appears to urge "comrade pilots" to abandon their "communist yokes" and join the other side, with typewritten message and facsimile signature of U.S. Army Officer Mark W. Clark. Measures 10" by 8", some toning, two hole punch at head.

"Support Withheld". [Korea:] First Radio Broadcasting and Leaflet Group, 1953. Chinese-language political cartoon propaganda from American forces attempting to reinforce resentment of Chinese towards Russians. Measures 8" by 5", some toning. Loose, but previously stapled in upper left-hand corner to a leaf typewritten in English by the Leaflet Group with a translation and explanation, measuring 10.5" by 8". Toned.

"Surrender Instruction". [Korea:] U.S. Psychological Warfare Division, [1953]. Printed leaflet with map showing Chinese soldiers how to escape and seek U.N. asylum. Measures 6" by 5", verso blank. Stapled in upper-left hand corner to a leaf typewritten in English by Psychological Warfare Division with a translation and explanation, measuring 10.5" by 8". Minor toning.

"Surrender Instruction". [Korea:] U.S. Psychological Warfare Division, [1953]. Printed leaflet with map showing Chinese soldiers how to defect to the U.N. Measures 6" by 5", verso blank. Stapled in upper-left hand corner to a leaf typewritten in English by Psychological Warfare Division with a translation and explanation, measuring 10.5" by 8". Minor toning.

"Testimonial to 83rd Regt, 8th NKPA Div". [Korea:] U.S. Psychological Warfare Division, 1952. Korean-language



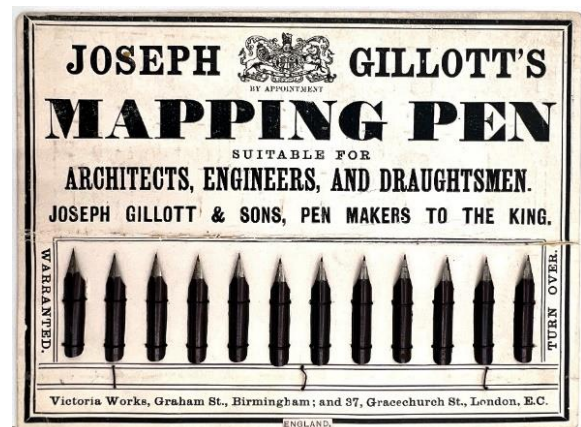
propaganda produced by American forces with a supposed testimonial of the good treatment offered by the U.N. to Chinese soldiers. Printed in pink, blue, and red. Measures 8" by 5.5". Stapled in upper-left hand corner to a leaf typewritten in English by Psychological Warfare Division with a translation and explanation, measuring 10.5" by 8". Minor toning.

[Untitled carbon copy, c.1953]. A carbon copy with Chinese script, and English translation in all-caps above: "NO FEAR, NEVER KILL YOU OR TAKE AWAY YOUR PERSONAL THINGS. GUARANTEE ALL YOU TO BE SAFE." Measures approx. 3" by 7.5", verso blank. Some wear, dust soiling, evidence of previous adhesive to foot.

[Untitled carbon copy, c.1953]. A carbon copy with message in English from the Chinese People's Volunteer Forces addressed to "U.S. Officers and Men": "Just think some things over before you hold the rifle and go to death in action!!!" Measures approx. 3.5" by 7.75", light toning, letter folds, edge wear.

"Welcome to 133rd CCF Division". [Korea:] U.S. Psychological Warfare Division, 1953. Printed leaflet in Chinese depicting a soldier who tells of how he escaped and was welcomed into the U.N. with open arms. Printed in pink, black and red, measuring 10" by 8". Stapled in upper left-hand corner to a leaf typewritten in English by Psychological Warfare Division with a translation and explanation, measuring 10.5" by 8". Toned, short tears.  
 (#22006770) \$3,200.

Very good. Toning, some occasional short tears or rust from staples.



3. [Pens and Writing][ Correspondence][ Gibson Girl][ Royal Family][ Abraham Lincoln][ Edwardian] **Collection of Edwardian Pen Nib Labels and Advertising Ephemera.** England and United States. c.1910. A fine collection of one hundred sixty one (161) items relating to the sale of pen nibs in Edwardian England and America, comprised of: one hundred fifty (150) chromolithographed labels for pen boxes of those 45 are unique; one (1) illustrated advertising cover; two (2) illustrated trade cards; five (5) illustrated advertising leaflets; one (1) card with twelve (12) actual Mapping Pen nibs; one (1) typewritten letter on illustrated company letterhead; a blotter, and one (1) original ink label design on glassine paper (keyline drawing for lithography). Over twenty different manufacturers and brands are represented in this collection, most based in Birmingham, London, or New York.

Highlights include the original pen label design on glassine ("David's Oriental Carmine Ink"), as well as the following: a sample card of pen nibs ("Joseph Gillott's Mapping Pen"); an illustrated advertising cover for Waterman's Ideal Fountain Pen, featuring a Gibson Girl; a pen label featuring a photograph of Queen Mary, Queen Consort to George V ("The Queen Mary Pen"); a pen label utilizing Abraham Lincoln's likeness (The "Abraham Lincoln Pen"); and two leaflets by C. Brandauer & Co. with actual size illustrations of pen nibs for sale.

There are 20 different types of pens represented in the labels

Double Cement  
Double Elastic  
Engrossing  
Exchequer Bankers pen  
Falcon  
Ladies Running Hand (extra fine)  
Latem (incorrodible)  
London  
Mapping Quill  
Music Ruling  
Pencil pen  
Post Office  
Round hand  
Scholastic  
School  
Shell Pointed  
Some display nib  
Spencerian  
Steel  
Stencil Cutters

## ECLECTIBLES

Includes two circulars with images and product information and usage for C. Brandauer & Co's Ltd including the Anti-Blotting Pens and Circular Pointed Pens (these represent an additional 49 types of nibs.

(#22006882)

\$2,800.

*Pen brands represented in this collection include: Hinks, Wells & Co.; Perry & Co.; British Pens Ltd.; William Mitchell; Plumes Pestalozzi; Perry & Co.; Ivison, Phinney & Co.; Ivison Blakeman Taylor & Co.; A. Somerville & Co.; Thos. Bower & Son; F. Collins & Co.; Claire Clifford & Co.; MacKinnon Pen Company; T.N. Hickcox & Co.; C. Brandauer & Co.; Esterbrook Steel Pen Manufacturing Co.; F.W. Snow; Joseph Gillott & Sons; Reliance Pencil Co.; Gustave Fischer & Co.; and Thaddeus Davids Ink Co., Inc.*

Very good to near-fine. Minor toning, the odd spot or short tear throughout. Glassine paper design has edgewear/chipping with minor loss. Evidence of previous adhesive to some items. One pen label has remains of black paper to lower left-hand corner.



4. [Elementary Education][ Kindergarten Art][ Folk Art][ Pedagogy][ Women and Teaching][ New England][ History of Connecticut][ Sewing and Embroidery][ Arithmetic][ Geography][ American History][ Publisher's Catalogues] **Comprehensive Teaching Archive of Mrs. Florence Tuttle Baldwin a Kindergarten Teacher.** North Haven, Connecticut. 1899-1901 A remarkable archive of material assembled by Florence A. Tuttle Baldwin, a schoolteacher in North Haven, Connecticut at the Sixth District School. Assembled between 1899 and 1901, the archive offers an exceptional look into the life of Baldwin and her classroom. Highlights include: Baldwin's grade



# ECLECTIBLES

book, carefully noting students' progress throughout the terms; examples of student work, including kindergarten art, writing, and arithmetic; a letter from the family of a student, inviting Baldwin to a birthday celebration; a host of clippings and manuscript excerpts saved by Baldwin for lesson planning; many sets of flash cards and schoolroom learning games; a book of blackboard designs for teachers; large pinpricked blackboard stencils; and a nice example of a paper "woven hearts". The archive also includes a wooden ruler, in a nice nod to "teacher" iconography (no apple, sadly).

A charming characteristic of this archive is that, because it represents such a contained time frame, the same names of children appear throughout, enabling us to "get to know" Baldwin's students vicariously. For example, Hazel Mansfield's work figures throughout the collection, and her family was the same that invited Baldwin to the birthday party. Almost all of the examples of kindergarten art are labeled with the student's names, and Baldwin's grade book shows careful attention to each pupil's development.

The archive contains a total of four hundred seventy-four (474) discrete objects organized into eight (8) categories including: School Books and Pedagogical Monographs; Partial Runs of Pedagogical Serials; Price Lists and Publisher's Catalogues; Lesson Planning Ephemera; Posters and Pinpricked Blackboard Stencils; Kindergarten Art; Miscellaneous Student Work; and a final category of Miscellaneous or Administrative Material.

## **School Books and Pedagogical Monographs**

1. This category contains 16 items ranging in size from 7" by 4.5" to 7" by 10.5", published in the late 19<sup>th</sup> C/turn of the century.
  - o 7 books on pedagogy/education/teacher's editions
  - o 9 leaflets, booklets, or single offprints on pedagogy

## **Partial Runs of Pedagogical Serials**

2. This category contains 39 discrete items, ranging in size from 9" by 6" to 12" by 10".
  - o 18 issues of *Practical Teacher* (II.1-II.3, II.5-9; III.1-10), published Sept. 1899-June 1900
  - o 15 issues of *Our Times* (X.1; X.7-20), published Sept. 1899-June 1900
  - o 2 issues of *The Primary School* (IX.1, another unidentified w/out wrappers), published 1899
  - o 1 issue of *The Connecticut School Journal* (V.21), published January 1900
  - o 1 issue of *Teachers World* (XI.3), published November 1899
  - o 1 issue of *The Western Teacher* (VII.1), published September 1898
  - o 1 issue of *The Educator* (XI.10), published December 1899

## **Price Lists and Publisher's Catalogues**

3. This category contains 39 individual price lists and publisher's catalogues, with a focus on pedagogy and classroom textbooks, ranging in size from 6.25" by 3.5" to 9.25" by 6.5".

## **Lesson Planning Ephemera**

4. This category contains 123 discrete items, ranging in size from 3" by 3" to 11" by 9"
  - o 1 book of slate/blackboard pictures

# ECLECTIBLES

- 1 upper lid to a “Drawing Teacher” geography stencil set
- 1 photo of a collection of stuffed ducks on a table
- 1 copy of “Little Speeches for Little Folks” in poor condition
- 1 (incomplete?) large set of flash cards showing phonics/syllables
- 6 printed envelopes with incomplete sets of flashcards or educational card games
- 7 Schraffs Chocolate boxes with incomplete sets of flashcards or educational card games
- 9 leaves (mimeographed?) handwritten music, notes, etc.
- 17 leaves of handwritten lesson planning (arithmetic, music, poetry, etc).
- 37 loose flash cards or cards from incomplete sets
- 42 newspaper or magazine clippings w/ poetry, etc.

## **Posters and Pinpricked Blackboard Stencils**

5. This category contains 20 discrete items, ranging in size from 5.5” by 5” to 26” by 18”.
  - 17 illustrated posters for classroom use and decoration, spanning the subjects of American History, Natural History, Anatomy, Penmanship, etc. (most or all from teaching/pedagogical serials)
  - 2 large pinpricked blackboard stencil posters depicting Mount Vernon
  - 1 chromolithographed die-cut in the shape of a horse head, presumably for classroom decoration
  - 1 large Shaker/A.J. White patent medicine advertisement, translated from English into 16 different languages/scripts including everything from Arabic to Bengali, Japanese, German, etc. Probably used as an example for the students to show them what different languages and scripts look like

## **Kindergarten Art**

6. This category contains 106 discrete items, ranging in size from 2.25” by 5” to 9” by 6”.
  - 64 kindergarten art patterns on cardstock (pinpricks on thick cardstock), including one on the back of the teacher’s daughter’s library card, and a couple on the back of food container cardstock. Animals most common subject.
  - 13 kindergarten art patterns on cardstock with embroidery
  - 22 kindergarten art patterns on paper (pin pricks on leaves of paper with printed grids)
  - 7 examples of student drawing and art, featuring geometric drawing and nature drawing

## **Miscellaneous Student Work**

7. This category contains 89 discrete items, ranging in size from 5” by 6” to 8” by 10”.
  - 24 leaves of manuscript arithmetic
  - 28 leaves of (mimeographed...?) student work depicting individual states with poetry
  - 64 leaves of manuscript penmanship, history, writing, lists of local agricultural products
  - 1 hand drawn and hand colored map of the United States

## **Miscellaneous or Administrative Material**

8. This category contains 42 discrete items, ranging in size from approx. 2” by 1.5” to 9.25” by 12”
  - 1 large wooden ruler
  - 1 gradebook with orange cover (“Peek A Boo” on upper wrapper)
  - 1 manuscript letter to teacher from family of student
  - 1 magazine clipping praising teachers as builders of character and reporting death of three educators

# ECLECTIBLES

- 1 booklet advertising an 1899 teacher's retreat
- 1 paper woven hearts Valentine
- 1 scrap paper used as an ink blotter
- 2 official communications from the State of Connecticut
- 2 Arbor Day 1899 programs
- 3 handwritten receipts/notes
- 5 envelopes addressed to teacher
- 11 blank Reward of Merit badges, unused, for affixing to prize books, some in original printed envelope, all contained in a small white paper covered cardboard box
- 12 sheets of blank scrap paper

A more detailed listing of material in the archive is available on request. (#22006829)  
\$3,200.

*Florence A. Tuttle Baldwin (1854-1926) married Benjamin Newton Baldwin (1854-1898) in 1881.*

Fair. Contains the following flaws: toning; short tears or chipping; water and damp staining; dust soiling; creasing; worming; general wear. Inactive mold present on some of the materials. Some or all of the serial runs and flash card sets are incomplete.



5. [Business Cards][ Railroad][ Fraternal Organizations][ Union] **A Collection of Business Card - Order of Railroad Telegraphers, Collected by a Child.** Otto Winters. United States. 1880s-1890s. Railroad business card album of Otto Winters, a life long railroad enthusiast including eighty-nine (89) business cards pasted-in representing train engineers, telegraphers, dispatchers, ticket agents, and others associated with the railroad industry in the late 1880s. Most are located in



## ECLECTIBLES

Wisconsin and the midwest, but other states including New York, Utah, and Texas are also represented. At least two of the cards include small stamp photo portraits (H.H. Weatherspoon and C.B. Hawley). Virtually all included were members of Order of Railroad Telegraphers.

The title page is inscribed "Otto Winter. Phil 1:3 (I thank my God in all my remembrance of you) Mother" The album was presumably given to him as a child. Represents rail workers from across the country from Menlo Park, CA, El Paso, Boykins, VA, Baltimore MD and many, many locations in the midwest. Most with ORT logos, some embossed, some with gem photos applied and others with logos from fraternal organizations. Most include their position and/or railroad affiliation.

Oblong 8vo (5.25" by 7.75"), approx. 20 blank leaves, 89 business cards pasted-in. Inscribed on first leaf recto, "Otto Winters. Phil: 1: 3. Mother." Loosely inserted in the front are the two calling cards (approx. 1.75" by 3.5" each) of Otto Winters and Minnie Radel. Bound in original red velvet with rounded corners, decorative brass hardware on right-hand corners of upper board.  
(#22001773) \$850.

*The Collector - Otto Winters The cards appear to have been collected when Winters was a child in the late 1880s. Sadly, he died in a tragic railroad accident towards the end of his career in 1940, when he was acting as head brakeman on the Wisconsin Valley Line of the Milwaukee Railroad; the engine exploded, resulting in the deaths of him and his coworkers, engineer Richard Grorich and fireman Alvin Jantz.*

Good to very good. Toned with some dust soiling, short tears, wear to edges of text block. Paper brittle/delicate, at least one leaf detached. Damage to upper pastedown.



## ECLECTIBLES

cotton. There is also a Milburn Wagon advertising card that depicts two stereotyped Black men in a wagon pulled by donkeys, alongside Black workers harvesting cotton; in the distance, a well-off White family is pulled in a fancier carriage by white horses. The final social aspect present is class. In an advertisement for Walker, Stratman & Co. Bone Fertilizer, a "tramp" is the butt of the joke, while a farmer looks on and laughs.

An expanded description is available on request; it includes full listings of manufacturers, products, and types of ephemera present in the collection, as well as rough ranges of dimensions.

Institutional sale only - to be contextualized for educational purposes.	(#8500442)	\$4,800.
--	------------	----------

*An expanded description is available on request; it includes full listings of manufacturers, products, and types of ephemera present in the collection, as well as rough ranges of dimensions.*

Very good to near-fine. Minor flaws in the collection include toning, short tears, chipping, dust soiling, or edge wear.



*Institutional sale only - to be contextualized for educational purposes.*



7. [Lithography][ Chromolithography][ Trade Cards][ Race and Racism][ Animal Cruelty]

**Grouping of Forty-Eight (48) Agricultural Trade Cards** Various. United States. 1850s-1890s. A grouping of lithographed advertising trade cards collected by a single individual over 30 plus years related to agriculture, dating from approx. the 1850s to the 1890s. Each card measures approx. 3" by 5". There are a total of forty-eight (48) trade cards divided into five (5) categories: Animals and Animal Remedies; Farm Equipment, Machinery, and Fencing; Millers and Milling; Seeds and Fertilizers; and unrelated products using agriculture in their marketing. The grouping represents thirty-four (34) different manufacturers and twenty-six (26) different kinds of products.

Of note are the gender and racial elements present. Gender roles are emphasized through farm machinery with strong handsome men wielding plows and heavy machinery, as well as with the reverse: young stylish women drive plows in a kind of "even a woman could do it"-style of marketing in two examples. Women are sometimes stylized as muses or goddesses, as in the trade cards advertising Alden Fruit Vinegar and Challenge Corn Planter Co.

Race and racism figures prominently in one example, a trade card advertising Dr. Jos. Haas' Hog and Poultry Remedy. The card depicts farm animals wreaking havoc on a farm next to a stereotypical "Mammy"-type character saying "Oh! Lordy!". Another example of race is present in the Macoupin Mills card, which depicts two Native Americans in a canoe stylized in the "Noble Savage" stereotype, catering to the White gaze.

Animal cruelty is sadly also on display in one trade card for the "Patent Steam Hog Stuffer", which is a machine that force feeds hogs.

An expanded description is available on request; it includes full listings of manufacturers and products.

Institutional sale only - as some of the materials require contextualized for educational purposes.  
(#8500443) \$1,700.

*An expanded description is available on request; it includes full listings of manufacturers and products.*

Very good. Minor toning, the odd spot or short tear.



8. [Chromolithography][ Social Culture][ Visual Culture][ Tobacco][ Cuba] **A collection of over 300 Tobacco Advertising Pieces Exemplify Printing Techniques and Popular Culture of the Time.** 1850-1880. A varied array of chromolithograph imagery depicting objects found appealing to tobacco smokers of the day. While the dates range from 1850-1900, the majority of the collection was produced between 1860-1880. A predominant theme is beautiful women. Additional topics include fantasy, racism, exotic locales, plantation life, men's sports and game, striking it rich and much more. It includes various types of advertising including cigar box and crate labels, trade cards, metamorphic trade cards, photographic cigarette crds, original art, cigarette wrappers, die-cuts, booklets, counter cards and a piece of original art.

Approximately one-quarter of the collection is folio size label crates; horizontal, vertical and square. Cigar box labels make up another quarter of the collection and include inner box, outer box, top and top sheet labels. It includes a four (4) label bound sample set and a number of salesmen samples. Included are several label proofs includes some from progressive sets including color printing sequence at base.



# ECLECTIBLES

While predominantly US producers there are a number of Cuban examples including over 35 marquillas cigarreras, c1850 chromolithograph 18mo cigarette wrappers produced in Havana. Aesthetically pleasing border decoration with juxtaposed dominant themes of white men with promiscuous mulatto woman. A particularly effective marking tool for the manufacturers. Lithographers include Ballin & Liebler, Calvert, Cameron, Chas Shields, Cyrus Lee, Detroit Litho, Donaldson, Evans, H. S. Crocker, Hatch, Heppenheimer, Heppenheimer & Mauer, Heppenheimer's Sons, Hoen, Kaufmann & Strauss, Knapp, Linder & Murray, Ottmann and more. (#8500076) \$38,500.

To view the collection, click: <https://photos.app.goo.gl/fpnqWkHLAvpukLPp6>

*A useful teaching aid for printing and publishing, visual culture, social history, design and much more.*

Few corner chips; overall fine



9. [Masquerade Ball][ Gilded Age][ chromolithography] **A Collection of 16 Gilded Age Masquerade Ball Tickets, Predominantly New York.** New York etc. 1872-1885.

*"Oh! banish Care," Such ever be the motto of Thy Revelry*



# ECLECTIBLES

A collection of 16 tickets or sample invitations to the Gilded Age debauchery known as the Masquerade Ball. Often waged by social clubs and/or the wealthy. A somewhat universal rule of remaining anonymous by staying masked until midnight applied. All of the tickets in this collection have been used as the stubs are lacking with end perforation. Publishers include Meyer, Merkel and Ottmann, Brett Litho, Louis E. Neuman, and Heppenheimer & Mauer. All chromolithograph and depicting revelers. The largest is 7" by 4.75". |

The collection includes:

## *Printed Front and Back*

Arion - New York - 1883 - Revelers cverso

Cercle Frncais De l'Harmonie, Acedemy of Music - New York, 1884 -Anthropomorphic Dancers verso

Gran Teatro Del Liceo - Spain - Regulations verso

Junger Maennerchor - New York, [1885] - Regulations verso

YGAA , Allyn Hall, Hartford CT, 1885 - monogram verso

## *Single Side*

HG. New York No. 1642

Masken-Ball New Yorker Sangerrunde, New York - 1882

Masken-Ball Schwabisxhen Sangerbundes, San Antonio, TX - 1882

Prospect Grand Bal-Masque, New York - [1885]

Prospect Grand Masque Ball, New York - 1885

The Annual German Fancy Dress Ball at the Music Hall, New York - 1872

Unidentified - Revelers with Jesters of All Ages

Unidetnified - Masked lady and gent entering the ball [1880s]

## *Samples*

"Natty" Embossed - can-can and masks

"Nictitate" Embossed - vignette of masked woman with masques

Jester and woman removing mask (#8500089) \$3200.

Light scrapbook residue, else fine.



10. [Stereotypes][ Racism][ Performances][ Minstrelsy][ Black America][ Song and Dance] **Black Entertainers, Blackness as Entertainment: 1829-1907.** United States. 1829-1907. A gathering of twenty-three (23) items promoting performances by and/or exploiting Black entertainers spanning the years 1829 and 1907. Most of the items are sheet music, with one printed flyer and one illustrated printed flyer. White people in black face and Minstrelsy are well represented, as well as at least a couple of examples that promote actual Black entertainers. It is unclear how much agency these performers had in shaping their careers. A stark visual reminder of the ubiquity of racist stereotypes in entertainment throughout American history. The items include (in chronological order):

"The Coal Black Rose, The Words written by White Snyder and Sung with unbounded applause by Mr. W. Kelley. Arranged for Piano & Guitar". Two leaves of engraved sheet music (11.25" by 8.25"), printed on rectos only. Complete. Engraving of black man in a rose on first leaf, black man playing banjo on the second; both stereotypical depictions. Philadelphia: Published for the Author, 1829. Plate mark visible. Some light foxing.

"Jim Along Josey". New York: Firth and Hall, 1840. Sheet music (12.75" by 9"), first leaf only, with title and caricature of Black entertainer on recto and music staves on verso. Ink stamp of G. Williams to recto. Toned.

"Massa Vite & Sally Snowball ... Sung by Mr. T.D. Rice, & Mr. W. West at the Surrey & Victoria Theatres". London: W.J. Horn, 1840s. Engraved title page only (13.5" by 10"), with engraved depiction of stereotypical performer on recto and beginning of music staves on verso. Toned. Tape repair.

## ECLECTIBLES

"The Original Mary Blane, A Popular N\*\*\*\*er Melody, sung with Universal Applause by all the Ethiopian Singers ... by H. Delma". London: Duncombe & Moon, 1840s. Engraved sheet music (13.25" by 9.25"), first leaf only and lacking rest of music. Features title and illustration of five Black performers with their instruments on recto, with beginning of music on verso. Plate mark visible. Light toning, tape repair.

Printed poster advertising prize dancing contest between "Champions of the World" Hank Mason and Mickey Warren at the Boston Melodeon. Depicts both men in wood engraved images. Boston: Forrest, 1859. Measures 18.75" by 6". Toned, some short tears, one tape repair to lower right-hand side. Verso blank.

"Dixiesland Polka". London, 1880s. Chromolithographed title-page (13.25" by 10") for sheet music (lacking). Depicts stereotypical Black people dancing in center of green oval.

"Susanna, Don't You Cry! Negro Melody sung by the Christy Minstrels". Authorised Edition. New York: C. Holt, 1880s. Sheet music (13.25" by 9.5"), first leaf only, with illustrated title on recto and staves on verso. Lithographic depiction of a stereotypical rendering of a black couple on recto. Lacking subsequent leaves.

"Thearle's Original Nashville Students Give a Portion of Concert in Plantation Costumes". [Aquatint?] poster depicting eight Black entertainers in "Plantation Costume" in front of a steam boat traveling down a river. Chicago: Goes & Quinsell, c1884. Measures 7" by 10.25". Toned, water stain and tape remnants to verso.

"Hie Away Ole Satan. Words and Music by M.H. Rosenfeld". Boston: White, Smith & Company, c1885. Engraved sheet music (13.25" by 10"), pp. 6, with lithographic title-page, depicting in caricature a Black woman protecting baby from a contemporary politician(?) stylized as the devil. Lightly toned. Dedicated to "Mr. J.H. Sayers of Thatcher Primrose & Wests Minstrels."

"Happy Darkies Barn Dance by Arthur E. Godfrey". London: Robert Cocks & Co., 1892. Sheet music (13.5" by 9.5"), pp. 8, with chromolithographed title-page on front depicting stereotypical group of Black people dancing in a barn. Toned. Tape to right-hand margin, spine chipped.

"Ambrolena Snow: An Afro-American Military Ballad by Bodine and Maywood". Chicago: S. Brainard's Sons Co, 1897. Sheet music (13.75" by 10.25"), pp. 4, with chromolithographed title-page on first leaf recto depicting caricature of a Black woman in upper-class dress. Ink ownership inscription of Lillian Farley to first leaf recto. Toned.

"Draw That Color Line: A Decision of Color. By Ben Harney." New York: F.A. Mills, 1897. Sheet music (14" by 10.75"), pp. 6, first and last pages printed in red. Stylistic typography on front in lieu of illustration. Lightly toned; tape repairs. Ink stamps.

"The Hypnotized Coon. Words & Music by Lew Sully". New York: Howley, Haviland, & Co., 1897. Sheet music (14" by 10.75"), pp. 5, [1], title-page on front printed in red and green. Lightly toned, short tears, tape repairs.

"N\*\*\*\*er, N\*\*\*\*er, never die, A Coon Simplicity with Primrose and Wests Minstrels..." Supplement



## ECLECTIBLES

to the San Francisco Examiner March 15, 1898. A sheet music bifolium (14" by 10.75") promoting a black face minstrelsy duo. Color illustration of black face minstrel with white gloves and tambourine on front, with caricatures of black faces on a music stave above. Toned, some short tears.

"Cunnin' Carolina Coon. By Warner Crosby and Matthew Woodward". Chicago: Sol Bloom, 1900. Sheet music (14" by 10.5"), pp. 8 including illustrated wrappers, front with stereotypical depiction of a Black Southern family and photograph of Lew Dockstader in black face. Ink stamp of Al Bernard to second leaf. Tape repair to spine.

"Baby You's the Swellest Gal". Words and Music by Chas. W. Kremer. New York: M. Witmark & Sons, [1901]. Illustrated sheet music bifolium (13.5" by 10"). Front depicts two black lovers in caricature, and photo of the Watterman Sisters. Advertises "Coon Ballads" on back. Tape repairs.

"Coon Coon Coon. Words by Gene Jefferson Music by Leo Friedman. Introduced and Sung by Lew Dockstader". Chicago: Sol-Bloom, 1901. Lithographed sheet music (14" by 10.5"), pp. 8, including illustrated wrappers; depicting of three caricatures of Black minstrels on front with photograph of minstrel "Will Strong". Toned, tape repair to spine, leaves loose.

"My Girl from Tennessee. Words by Andrew B. Sterling, Music by Lee Olean Smith". New York: Vandersloot Music Co., 1902. Sheet music (14" by 10.75"), pp. 6, including illustrated wrappers depicting Black woman with Black Cupid on her shoulder, and a photograph of Florence Courtney and Mamie Dunn. Lightly toned; chipped.

"Let Me In, Dat's All: A Darkey's Lamentation. By Felix F. Feist and Ted S. Barron". New York: Leo Feist, 1903. Sheet music (13.5" by 10.5"), pp. 6, including illustrated wrappers depicting caricature of Black man in rain trying to get his sweetheart to open the door. Toned, chipped.

"By the Watermelon Vine Lindy Lou. Words and Music by Thos. S. Allen". Boston: Walter Jacobs, 1904. Lithographed sheet music (13.75" by 10.75"), pp. 6, including illustrated wrappers depicting young black couple sitting in a large watermelon slice. Ink ownership inscription of Mrs. J.A. Dunham to front. Light wear, short tears, paper repairs.

"A Crazy Coon Concoction. Dan Dan Danuel. Words & Music by Ed. Rogers." New York: F.B. Haviland, 1904. Lithographed sheet music (14" by 11"), pp. 6, including illustrated wrappers. Depiction of minstrel on front, with small photo of Madge Fox below. Some chips, tape repairs, one notable tear (upper right-hand corner).

"What You Goin' to Do When the Rent Comes' Round? Rufus Rastus Johnson Brown. Words by Andrew B. Sterling Music by Harry Von Tilzer". London: Harry Von Tilzer, 1905. Sheet music (14" by 10.5"), pp. 6, including illustrated wrappers depicting caricature of Black couple and photo of Tilzer and White performer Ethel Robinson. Short tear to left-hand margin. Toned.

"The Best I Get is Much Obligated to You. Song by Benjamin Hapgood Burt". New York: Jerome H. Remick & Co., 1907. Sheet music (13.75" by 11"), pp. 6, including illustrated wrappers depicting an over-laden Black porter. In the background, two White porters relax on a bench. Tape repairs to right-hand margin, spine.

(#210007348)                      \$18,000.

# ECLECTIBLES

*Collected over a period of 40 years and retained as a collection by an individual who found each item significant in its own right and more profound as a collection.*

*Institutional sale only - to be contextualized for educational purposes.*

Very good.

## 11. [Child Labor][Child Welfare][Hine][NCLC] National Child Labor Committee (NCLC) Collection



A Collection of National Child Labor Committee (NCLC) photographs  
and narratives is being offered jointly by:

Eclectibles  
Sheryl Jaeger  
47 Lakeview Heights  
Tolland, CT 06084  
[ephemera@eclectibles.com](mailto:ephemera@eclectibles.com)

House of Mirth Photos  
Stacy Waldman  
22 Cottage Street  
Easthampton, MA 01027  
[houseofmirthphotos@gmail.com](mailto:houseofmirthphotos@gmail.com)

*Vertrice Lawson, 15 years, in 4<sup>th</sup> grade. Quit last year. The lad  
working in hole 20 feet deep. Has rigged up a lamp at the  
bottom of the hole to release the "damps".*

## Introduction

Founded in 1904, the National Child Labor Committee (NCLC) set out on a mission of "promoting the rights, awareness, dignity, well-being and education of children and youth as they relate to work and working." Starting in 1908, the Committee hired Lewis W. Hine (1874-1940), first on a temporary and then on a permanent basis, to carry out investigative and photographic work for the organization. As the project grew and progressed a number of other photographers or investigative photographers/journalists joined the team. Beyond studying the results, the images and narratives were used to increase awareness of the problem of child labor. In 1924, the Child Labor Amendment was passed, but was never ratified. The amendment is still pending today. The National Child Labor Committee continued its work into the 1990s.

A numbering system was created by someone at NCLC (perhaps Hine) in order to assure each photograph and accompanying narrative/caption had corresponding but unique numbers. The NCLC distributed the photographs as part of its publicity and educational efforts.

*Age 15 - can't read or write; attended school only part of two terms*

## Collection

The collection or archive is comprised of approximately 980 unique items including 480 photographic prints in envelopes, many include the negatives and descriptive caption cards. It also includes, 330 negatives, an addition 27 larger format photographic reprints and 140 descriptive caption cards without photographs. Finally, there are two (2) printed Legends of Photographs relating to the Tiff mines. The descriptive caption cards describe the photo subjects, offering a detailed depiction of working and living conditions of many children--and adults--in the United States between 1936 and 1953, the majority in 1937-1938.

Previously found NCLC records were numbered from 1-5126. NCLC records found in this collection start at 5312, the last number being 9966, thus making them a unique and distinct from those previously identified.

Of additional note, there are two (2) envelopes housing negatives from 1931 identifying the photographer as Hine, who was thought to have left the program years earlier. The materials in this collection are new to the market: essentially, they are newly found history.

*"What is there for a girl to do but get married"*



## The Photographs

The photographic prints found in the NCLC records are on single weight paper. Most range in size from 3.5 x 3.5 inches to 5 x 7 inches and most appear to have been developed at the locations they were taken, at local film developing locations that you would find in drug stores and the like. Identified photographs include Hine, Sidel, Ruth Scandrett and Dave Myers among others. There are 17 identified as Hine specifically, however a number of others show all of the characteristics of a Hine image, including Bootblacks, Newspaper Boys and the Garment Industry.

*The six-year-old often picks hops for 4 hours a day!*

*She is one of hundreds of young children who work in the hops field -1938*

## The Photo Captions

The photo captions are both hand written and typed. When hand written usually on the reverse of the photo. When typed they are either on index cards or actually typed on the envelop housing the photo and/or negatives. The cards include some or all of the following information:

- Unique NCLC identifier number
- Name of the individual(s)
- Location, including the site e.g. mine name
- Work tasks, hours and wages
- Date
- Age
- Living situation
- Level of education
- Quotes from the individual depicted e.g.
- Family history

In addition to the photo captions, this collection includes two (2) Legends of Pictures (5751-5800) and (5806-5927) taken in Tiff Mines in 1937 by G. E. Gibbons, Cincinnati.

*Children too young to pick apples, carry water.*

## Demographics

Of the items in this collection approximately 75% depict workers, either individuals or families, while the remaining 25% depict facilities, locations, housing and group activities.

# ECLECTIBLES

## Distribution by Labor Force:

- Agriculture (35%) including general field workers, pickers of hop, apples, beans, berry and tomatoes, planters of beans and corn and tobacco and hop yard workers'
- Mining (25%) predominantly Tiff with some coal
- Industry (20%) including banana case makers, brick loaders, cannery workers, crate nailers, garment workers, highway signs and gas house workers
- Street (10%) including bootblacks, cub hops, distribution of fliers, newsies and magazine boys.
- Forestry, Local Workers (10%) including bedspread makers, hotel page, piece workers making favors, store workers, log workers, pole peelers, wood workers and store clerks.



The majority of the images are from Missouri, New Jersey, South Carolina and Colorado, with representation from the following states: Connecticut; Oregon; Alabama; New York; Arkansas; Pennsylvania; Mississippi; California; Louisiana; Ohio; Tennessee; Washington; Maine; and Texas (in descending order in terms of what? number of images per state?).

*Left school after 7th grade - started digging (Tiff) at 6yr.*

## Collection Strengths

The demographics represented in this collection present the breadth of the crisis and how it spanned industry and community. However, the true significance of the collection is the story told by each and its corresponding narrative written by the NCLC observer, be it photographer or other individual. The story is further developed when multiplied by all of the photos and narratives featuring a particular location. As an example, this collection is particularly strong in material on the Tiff mines. Much can be learned about conditions at the Paw Paw Patch or Possum Trot Hollow mines in Missouri by researching these materials.

# ECLECTIBLES



G 88 - 5838

Tiff Mines, Mo.  
July 1937

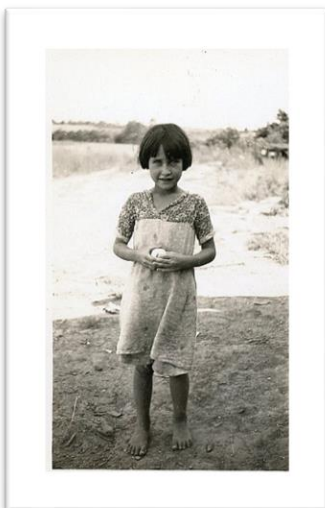
Fabian DeClue. 10 years, in 2nd grade. orphan. Living with Tom Pratt, a Frenchman with an Irish name. Mr. Pratt is well along in years - in the sixties - and has a hard time to make ~~man~~ enough for himself, his wife and grown daughter. Pratt is an uncle of the boy, who has two sisters cared for by other people in the neighborhood. Pratt feels he is not able to care for the boy, yet he could not bear to see the children distantly separated which would have happened, had he not given a home to the boy. Pratt and the boy made about 1000 pounds last week and the outlook for this week was not much better. Pratt's wife and daughter scrap tiff every day. They gather from 500 to 1000 pounds a week. The wife is in poor health and complained bitterly of the effects of carrying the heavy buckets of tiff. It should be remembered  
(Over)



#5858 G. 108 1937 Tiff Mines Missouri

McGregor Claim

Lonnie Stranger; 12 yrs; in the 4th grade; made a dollar last week. See G. 113 for family history. Came upon this boy working by himself .



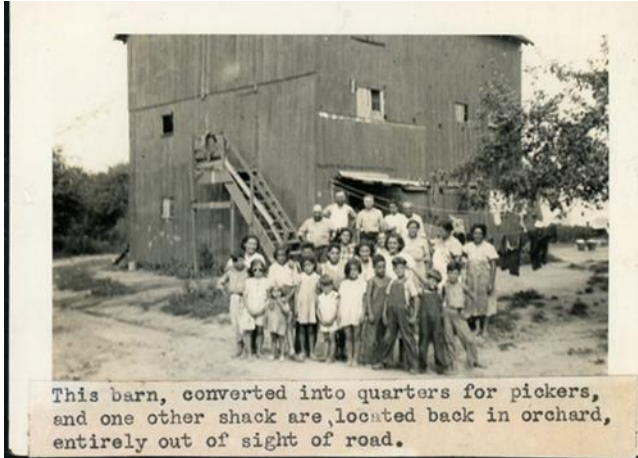
#5821 G. 71 1937 Tiff Mines Missouri

Walters claim

Della May Rullo 7 yrs.  
The story of the Rulo family illustrates the frightful poverty of the tiff miners, especially where the families are large and the children young. In addition to the four children pictured there are four more; Marcella 13 yrs; John 4 yrs; Dolly 14 months; and Margurete 3 mo. Please note the age of the mother is 26 and her oldest child is 13. This girl was living with relatives and I am satisfied for no other reason than because they could not feed all of them. I am firmly of the opinion these children were actually hungry; in fact I doubt if they have ever had enough to eat.



## ECLECTIBLES



This barn, converted into quarters for pickers, and one other shack are located back in orchard, entirely out of sight of road.



that tiff is next to lead in weight and a small amount of it makes a heavy load for anyone.

Mr. Pratt and the boy make the "living" which among tiff miners always means the food. The wife and daughter's earnings are used for clothing, doctor bills, etc. Where women are working this is the usual arrangement, unless, of course, the men's earnings are not sufficient to buy the food. Last week Pratt's wife and daughter had to let their earnings go for food. There was no alternative.

G.W. 24 - 5774

Paw Paw Patch  
Richwoods, Mo. - tiff mines.

Glenna Camden, 11½ years old. Glenna didn't want her picture took cuz she was too dirty." When her maw said she'd slap her if she didn't she looked up for a minute. She never went to school till last year, and then just for a while. She helps her family "scrapping" and cleaning tiff.

# ECLECTIBLES

Collectively, the collection provides documentation useful for the study of several major intersecting early twentieth century movements and developments. It is rich in research content.

To view a select group of images, click: <https://photos.app.goo.gl/pYH2J5JQ2zJu98Z4A>

To review as selection of Hine negatives click: <https://photos.app.goo.gl/z9NgVsc8X7pLf1DJ9>

(#29000301)

\$150,000 (term available)



12. [Advertising][ Promotion of Children][ Women's Work][ Advertising Trade Cards] **Victorian Advertising - "So Easy a Child Can Do It".** 1880s. Twenty-five (25) advertising trade cards flyers and pamphlets with illustrations of children easily and efficiently using a product to accomplish a task. The majority are focused on women's work . They include:

Nine (9) food related cards of children preparing foods for Atmore's Mince Meat, Nestle's Milk Food, Hornby's Oats, Butterine, Chicago Processing and Provisions (canned meats), Piefilene and Ta-Ka-Kake,

Six (6) for laundry and soap products including Chief Soap, New Process Soap, Buchan's Carbolic Disinfecting Soap, Ivoryne, Empire Wringer and Moore's Sheet or Book Soap -- individual soap sheets in a book for all kinds of hands.

Four (4) Sewing Machine cards including Howe, New Home, Leader and the Standard Sewing Machine.

Three (3) for Stoves including Glenwood & Elmwood and Richmond Stove Co. Additionally a

## ECLECTIBLES

pamphlet with little girls baking with a Garland Stove in the background and words and verse at base for a backing song. The inside pages promote the product.

Two (2) of children cooking with Granite Iron Ware pots.

A mechanical die-cut card depicting a little girl displaying the interior of a Stone White refrigerator.

One for Chase's Liquid Glue depicting children creating a scrap book.

And finally a young girl in fine attire mowing a lawn with an Excelsior Lawn Mower (for Horse or Hand Power) while the adults play badminton. (#27100653) \$525.

*Heavy wear/repair to refrigerator card.*

All depict children, happily engaged in household chores traditionally reserved for mother. Designed by men using children as advertising ploys to "make mother's life easier".



13. [Advertising Promoting Children][ Metamorphic Cards] **Metamorphic Trade Cards Promoting Products for Children.** 1880S. A grouping of five (5) metamorphic trade cards that depict before and after views of awkward children turning bright, attractive and well behaved children -- just by using a product. Products include Patent Tray for Children, Children's Patent Elastic Knee Protector, Solar Shoes, Davidson Brothers (Mens and Boys Clothing) and E. G. Burrows (Youths, Boys and Children's Fine Clothing). Each measures 3" x 5" when open flat. (#27100654) \$245.

Moderate wear.



14. [Metamorphic][ Advertising][ Trade Cards][ Tobacco] 7 metamorphic advertising trade cards



15. [Social Satire][ Gilded Age of New York] **Satirical Caricatures - New York's Gilded Age, Politicos, Industrialists and Robber Barons.** "Kash" (Cassius Marcellus Coolidge) & Tobin. New York. [1870s]. An assemblage of 12 advertising trade cards satirizing the rich and famous of New York's Gilded Age. Shown in demeaning caricature often riding children's toys. Two series of six (6) cards. The first is by "Kash" (Cassius Marcellus Coolidge) that includes Jay Gould riding a dragon headed Western Union pole, Bob Ingersoll riding an inflatable dragon captioned Infidelity, PT Barnum riding a circus train led by an elephant, Henry Bergh riding a hobby horse and B.F. Butler riding a stick pony with a ram's head captioned Presidential Ram and finally W.H. Vanderbilt riding a toy train captioned NYC. Each with the title "Every Man Rides His Own Hobby" and promoting a New York Clothier. The second is by Tobin and includes Henry Bergh holding a toy elephant captioned Ye Kind-hearted Man, W.H. Vanderbilt on a train with money bags captioned Ye head of Ye heap. Thomas DeWitt Talmage riding a tricycle captioned Ye celebrated Divine, Peter Cooper with his reading glasses and hand tucked in vest is captioned Ye great Philanthropist. Boss William Tweed overstuffing his clothing with a pipe in his hat, carrying a big stick and leaning on Tammany is captioned "Ye boss of Ye Shop. The final is James Gordon Bennett Jr. hawking cards 4 for a Caw-Vouter, captioned Ye Broadway Fakir. Promoting various products. Cards measure 4.75 by 3.25 inches. (#8500030) \$500.

Scrapbook residue on reverse. One with corner clips. Generalized light wear.



16. [Women's Work][ Gender Roles][ Social History] **85 Years of Print Reinforcing a Women's place is in the home doing "Women's Work"**. 1865-1949. Historically, ingrained by print media, from early childhood females are depicted as being responsible for domestic matters and chores. | This is played out in this small collection of 20 items from the earliest piece an 1865 advertising cover depicting a mother with a modern washer with crank wringer while her child sits near by washing her dolls clothes to the latest a 1949 children's book titled "My Busy Week" a series of images with relevant rhyming verses on a little girls roles in domestic work and play and how she should be equally happy at work and play. | An offset to the remaining items in the collection is a 1921 piece produced by the Women's Bureau - US Department of Labor titled "When Women Work" it contrasts good and back working conditions for women working outside of the home and reinforces the need for gender equality and reinforces that "America will be as strong as her women". | A majority of the materials in the collection are booklets or pamphlets and are illustrated with women and/or girls using the products. The primary objective of many of these pieces is to stress an improved method or product, making less work for the woman, but specifically for the women, there is no implication these products would be used by men. Categories include Cleaning and Sanitation, Cooking & Baking, Gender Roles, Laundry, Domestic Product Catalogs, Shoveling Coal, Sweeping and Vacuuming and Working Women. | A database describing each of the items is available via pdf or in our Catalogue for this fair - found in our "booth" at the lower right. (#21000703) \$1,000.



# ECLECTIBLES

Overall good, few with some condition issues.



17. [Ambassador][Denmark][legal][ Utah Territory][ real estate][Panama][war claims][Railroad Development] [ St. Louis & Kansas City Railway and the Indianapolis][ Western Railway Company] [ King Christian IX Of Denmark] [Danish royal family] **The personnel and business archives of John Ewing Risley (1840 - 1912) a prominent New York lawyer, businessman, and real estate mogul, comprised of over 2300 letters and documents.** A brief summary of each section follows. For the complete description click [HERE](#). Spreadsheets detailing the specifics on the collection are available upon request.

## AMBASSADOR

In 1893, was appoint by President Grover Cleveland to the post of Envoy Extraordinary and Minister Plenipotentiary of the United States to Denmark. He served in this post until he was recalled by President William McKinley in 1897. During his tenure in Denmark, Risley would become a highly sought-after guest and was popular even amongst the common people of Denmark. This collection has been divided into four categories: Social, Official Business of the Legation, Financials, and Miscellaneous. The collection has an approximate total of 690 pieces, and has been organized either alphabetically or chronologically depending on the category. The dates of the collection range from 1893 to 1898. Additionally, there is an Excel database of the individuals/groups within the collection.

## RAILROADS



# ECLECTIBLES

A collection of 450 plus letters and documents relating to the railway business dealing and investments of New York lawyer John Ewing Risley. Although born in 1840 in Indiana and attending Wabash College in Crawfordsville, Ind. his law practice operated mostly out of New York City. Along with his investments in a variety of railways out west, Risley was known for a variety of high profile legal cases and as Ambassador to Denmark from 1840 – 1897. Risley's railway dealings showcase what was one of the most was a turbulent time for railway companies, with enterprises both being founded and falling into bankruptcy with remarkable frequency. By the mid-1890s approximately one fourth of railroads in the US had failed. This represented well over 40,000 miles of track. These failures were often the result of railroad overbuilding and shaky railroad financing. While this collection includes a variety material from several railways that Risley invested in, the bulk of the material deals with two railway routes: the Cleveland, St. Louis & Kansas City Railway and the Indianapolis, Decatur, and Western Railway Company. The two railways Risley and his partners invested in, would eventually fail, mainly due to a variety of legal battles. A synopsis of the events of each railway during the time Risley owned them is provided further on in this description. The collection dates from 1870 to 1904, with the bulk of the material from 1889 to 1893. While the majority of the collection is correspondence (letters and telegrams), there is also an assortment of legal agreements and ephemera. In total, the collection has over 250 letters, 65 telegrams, 100 legal documents, 40 pieces of ephemera (misc. envelopes, notes, name cards, etc.), and 2 notebooks. Additionally, there is an excel database available listing the various individuals, railways, and companies associated with this collection. The materials within this collection highlight an important time in US history, and showcases the various back dealing, competition, and political vying that went on as railroad companies rose as fast as they fell.

As noted above each section is accompanied by a database. The database in this section includes particulars on the Railroads, Individuals, the Mortgage companies, Construction companies and the Courts involved in the transactions. The railroads include Baltimore and Ohio Southwestern Railroad Co., Central Missouri Railroad, Cincinnati, Hamilton & Dayton Railway Co., Cincinnati, Hamilton & Indianapolis Railway Co., Cincinnati, Indianapolis, & Western Railway Co., Cleveland, St Louis and Kansas City Railway Co., Cleveland, St Louis, & Kansas City Railroad, Indianapolis and Wabash Railway Co., Indianapolis, Decatur, and Western Railway Co., Indianapolis, Decatur, Springfield Railway Co., Indianapolis, Quincy, and Missouri River Railway, Missouri Midland Railway Co., St. Louis & Kansas City Short Line, St. Louis Alton, and Kansas City Railway Co. and St. Louis and Chicago Railway Co.

## LAW PRACTICE

A collection with approximately 1,190 pieces relating to the personal life and law practice of John Ewing Risley (1840 – 1912). Born in Indiana, completed his schooling and passed his bar in 1860 in Terre Haute before then moved to New York in 1864. The majority of this collection stems from after he moved to New York. Risley was involved in several prominent legal cases, mainly stemming from various war claims. He was also involved in real estate, owning several investment properties and also acting as a banker providing mortgage loans to individuals. He also invested heavily into a variety of different business, such as a timber company in Panama, and mines out west. On a personal level, he was very interest in the genealogy of Risley family and was able to trace back his lineage to 1275. This collection dates from 1857 to 1914, and has been organized into five sections: Business, Legal, Family, Real Estate and Miscellaneous. Unless otherwise stated the materials, themselves have been arranged first by category, then chronologically. Additionally, there is an Excel database of the individuals and companies Risley was involved with. (#22000100) \$5,500.



18. [Women and Beauty][ Hair makes a difference][ scalp treatment for relaxation][ hair styles] **A Girl and Her Hair...A collection of 7 booklets relating to the importance of nice hair and loveliness.** John H. Breck , Proctor & Gamble, etc. Springfield MA. 1920s-1950s. A small collection of seven booklets stressing the importance of beautiful well coifed hair and how to accomplish it and general information on the secrets of loveliness and beauty on a budget. the publications were published by the makers of beauty products and a surprising soft soap (no pun intended) marketing approach. They include

A girl and her Hair...Proctor and Gamble. 1949. 32 pp. quarto. Topics include How to care for your hair, How to wear the hair with several examples by face shape, permanent wave and finally Hair manners, such as "combing your hair in public is one of the first ways to destroy charm", "Don't appear in public in pincurls" and "don't fiddle with your hair".

A girl and her hair...Proctor and Gamble. 1948. octavo. 13 pp. Includes hair anatomy, when brushing your hair is necessary, hair troubles with hard water, Pincurls and how to set them, Popular Hair-Does "fit to your face", Machine and non-machine permanents and the cause of hair

## ECLECTIBLES

problems. Each section incorporates the use of "Preen".

For Beautiful Hair Always use Breck Preparations. John H. Breck. 1929. 8pp foldout pamphlet discusses hair and care, the three stages of failing hair and how to correct it with Breck.

The Story of Beautiful Hair. John H. Breck. 1940. 37 pp. octavo. Prepared for the trade. Topics include individual specific treatments for a variety of hair conditions including Oily Dandruff and Over-bleached Hair. Additionally discusses permanent wave and Care of the beauticians hands. It concludes with information on an array of Breck products.

Scalp Treatment as a Medium of Relaxation. John H. Breck. 1942. 16 pp. octavo. It begins with a quote from Cicero "Long life is denied us; therefore let us do something to show that we have lived". Breck believes scalp treatments (including message) an effective way to relax. It includes testimonials spanning 40 years. Followed by a four step instruction on scalp message/treatment.

Secrets of Loveliness. Rawleighs. 1932. 31 pp. octavo. Major content includes care of skin, the art of make-up, blackheads and pimples, care of the hair, scalp message, shampooing and a wide array of conditions of the hair, keeping your hands youthful and luxurious bathing. Nicely illustrated with relevant color images from photographs of the products and black silhouettes.

Beauty on a Budget. 1957. Gillette. 16 pp. octavo. A similar format to the above including the anatomy of hair, Topknot troubles, to perm or not to perm, Spin Curls, Pin Curls, facial massage, Hair styles and how to pin them, About Face and A matter of make-up.

Largest piece 11" x 8 1/2". (#20208663) \$500.

*The booklets focus solely on the importance of outward appearances to the exclusion of all else.*

Good or better condition.



- One item of particular note is one of the few 20th Century items in the collection, a die-cut menu for "Coon-Chicken Inn" operated coast to coast from the 1920s - 1950. The collection includes 59 different pieces.

- Abusing
- Domestic Help
- Entertainment
- Family Life
- Irresponsible provider

- [www.eclectibles.com](http://www.eclectibles.com)

## ECLECTIBLES



20. [Printing and Publishing][ Porcelain trade cards][ Advertising and Promotion] **A collection of 68 fine cartes procelaine or trade cards.** Belgium. 1840-1860. A collection of 68 fine cartes procelaine or trade cards made in Belgium from 1840-1860. It includes 32 "printer's own" trade cards, 20 of which are mounted in a period album. Approximately 25% are greater than 10" another 25% are 7" x 9.5". Fine printing with vibrant color. A cross-section of including

Architecture  
 Art Lessons  
 Art Objects  
 Banners and Canvases  
 Book Binding  
 Books, Cards  
 Carpentry  
 Chandeliers  
 Cloth  
 Clothing  
 Clothing / Suits  
 Coffee  
 Concierge services  
 Experiences  
 Finery  
 Fur Clothing  
 Gun Club  
 Hand Tools  
 Hardware, Crocks, Cigars  
 Historical Memento  
 Interiors  
 Metal work

Millinery  
 Music  
 Paper manufacturing  
 Paper, Pens, etc.  
 Printing  
 Printing / Photography  
 Ship Construction  
 Stage productions  
 Wine



# ECLECTIBLES

The cards were printed by 36 different lithographers with 13 by Daveluy and 11 by G. Jacquain. Lithographers include

Barella

Bevernaege

Bogaert

Brandt Brothers

Brothers Bevernaege

Carbote Brothers

Carbotte Brothers

D. Van Herck

Daveluy

De Bruyn

De Lay-de Munttere

De Lay-Muyttere

Decobert

Defferrez

Delay-De Muyttere

Deltosse

E. DeLay

G. Jacquain

Gyselynch

Hannotiau

J. Heger

Jean Lots

Kirsch

L. Hoffmann

Landrun-Fouet

Levionnois Freres

Mayer

Md de Chapeaux

Not listed

P. Vandesteene

Ratinckx Brothers

Seldenslagh

Steenacken

T & D Hemelsoet

T. Impens

Overall excellent.

(#8500052)

\$25,500.



## 21. [literature][ children's books][ stationary][ anthropomorphic][ anthropomorphism][ printer's proofs] **The Pictorial**

**Archives of W Straker Ltd, London, with over 1000 Printing Proofs, c1920- 1940.** W Straker Ltd. London. c1920-1940.

W. Straker Ltd is as printing and stationary company that was founded in 1863 and is still in business today. This album, or guard book, is a collection of over 1000 printer's proofs in black and white and monochrome. Some of the illustrations in this album were done by E. H. Shephard, Mabel Lucie Attwell, Stanley L Wood, M. D. Hardy, Agnes Richardson Savage, Sylvia I Venus, Ernest Aris, E. M. Ingall, Harry B Neilson, Joan Hoyle, Montague B Black, L R Brightwell and others. Most of the proofs have a number written on them in red ink, mostly corresponding to an inventory number. This album serves as an invaluable look at British children's book illustration during this period. Such a complete printer archive is extremely rare. The large album has black leather covers and a W. Straker LTD book plate on the front interior cover. 17 1/2" x 12 1/2". (#27000505) \$6,500.



# ECLECTIBLES

To view images click on: <https://goo.gl/photos/EELQsLL1efoq2w1s9>

*The company produced plates for many British children's books during the 1920s and 1930s.*

*Covers show some edge wear due to rubbing. Wear to tissue interleaves. Minor stain and glue marks. Printer's marks. Some paper clip rust. Overall this is in very good condition.*



22. [Patent Medicine][ Vin Mariani][ Cocaine][ Advertising Post Cards][ Artists] Vin Mariani, Cocaine & Wine, Patent Medicine - A collection of 150 post cards "L'Album Mariani" designed by famous artists. 1900-1910. A collection of post cards introduced in five series of thirty created by renown artists of the day. Of the 150 cards this offering includes 119 original unused post cards and 31 photocopies of the original cards (place holders). The images were created by the artist, usually designed after one of their original works but making the Vin Mariani the featured element. Many of the cards are captioned with reference to the product. Other artists created completely new concepts to promote the tonic. Each card measures 5 1/2" x 3 1/2". As an example, the artists in the first series Paul Avril, F. Roybet, Ch, Waltner, Lévy-Dhurmer, G, Meunier, Paul Renouard, H, Berteaux, Muenier, Mucha, Hermann Paul, Eug, Murer, Lacault, Ribéra, K, Adler, Léon Glaize, Le Sidaner, Paul-Albert Laurens, Louis Noël, Ferigoule, A, Lalauze, Hagborg, Atalaya, W, Bouguereau, A, Maignan, J, Cheret, De Richemont, Bigot, Sem, Léandre and L, Vallet. (#27000716) \$,2600.

For complete list of artists & history click here: [Mariani Artists & Timeline](#)

*At age 25, in 1863, Angelo Mariani marketed a patent medicine called Vin Tonique Mariani a la Coca de Perou. Based on Bordeaux wind infused with three varietals of coca leaves in the bottle. It was immediately applauded as an ideal stomach stimulant, analgesic on the air passages and vocal chords, appetite suppressant, antidepressant and treatment against anemia. Dosed as a small glass to be taken 3 times a day, 30 minutes before meals. Each ounce contained 6 mg of cocaine. Loved by kings and queens, popes and presidents, scientists and inventors, writers and dancers and more. Testimonials filled 15 leather-bound published volumes.*